

CHURCHILL
CHURCHILL MANITOBA

ARR
RADIO

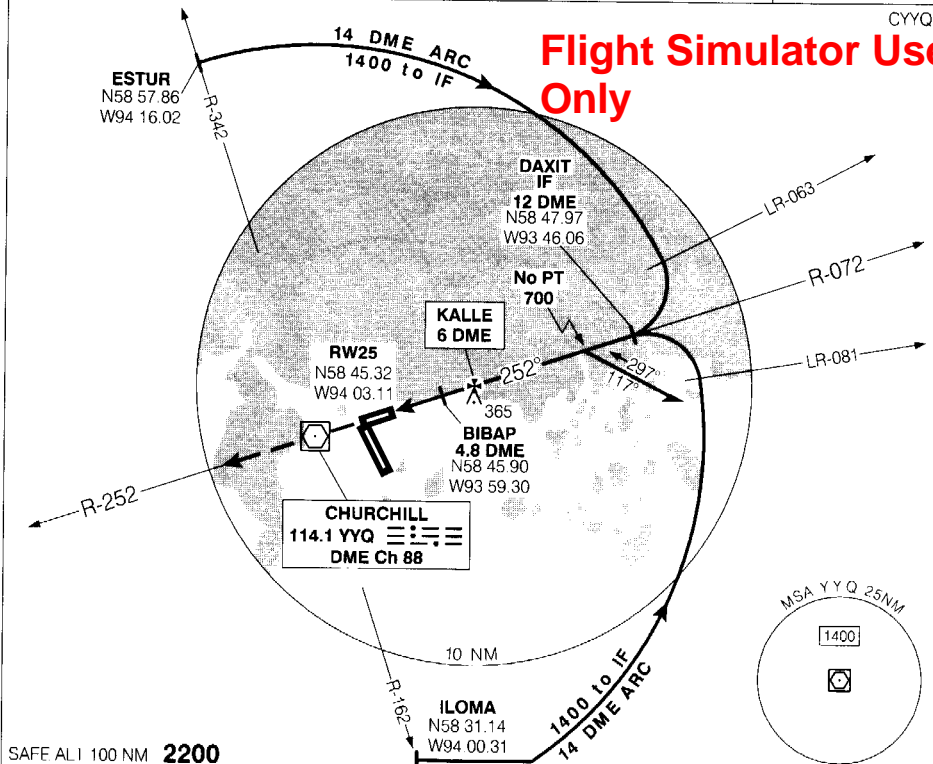
RADIO
122.2 (MF 5 NM)
327.4

ELEV 94

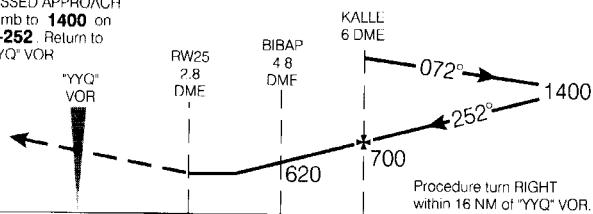
TDZE 25 85

CYOQ

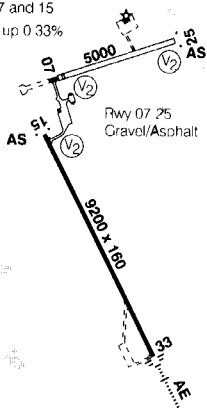
Flight Simulator Use Only

SAFE ALI 100 NM **2200**

MISSED APPROACH
Climb to **1400** on
R-252. Return to
"VVO" VOR.



Right hand circuits
Rwys 07 and 15
Rwy 33 up 0 33%



CATEGORY	A	B	C	D
VOR/DME	<div> <div> <div>2.0</div> <div>1.2</div> </div> <div> <div>380</div> <div>(295)</div> <div>1 1/2</div> </div> </div>			
CIRCLING	<div> <div>600</div> <div>(506)</div> <div>1 1/2</div> </div>		<div> <div>600</div> <div>(506)</div> <div>2</div> </div> <div> <div>700</div> <div>(606)</div> <div>2</div> </div>	

Knots	70	90	110	130	150
Min:Sec					

VOR/DME RWY 25

EFF 24 FEB 00

CHANGE: Revised

N58 44 14 W94 03 26

VAR 0'

CHURCHILL MANITOBA

CHURCHILL

NAD93 ▲