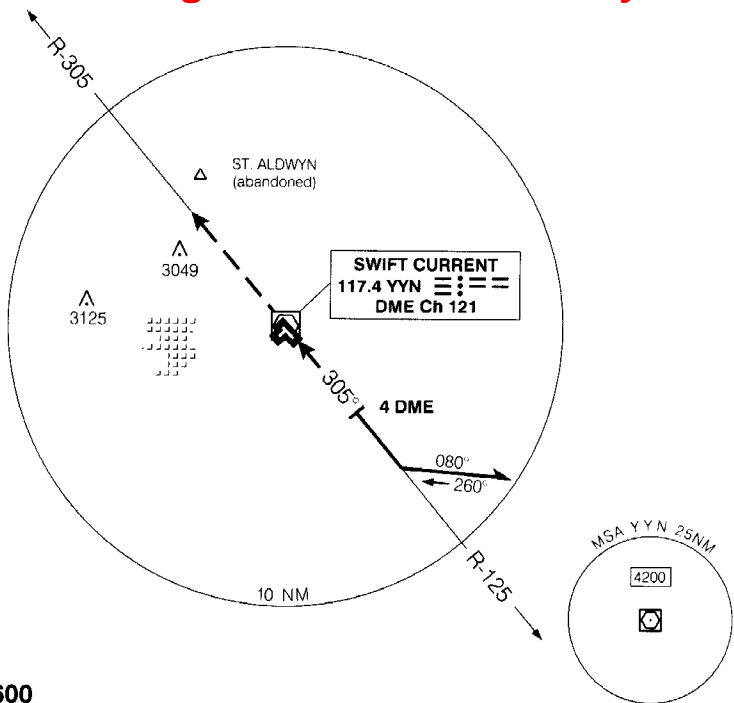


AWOS 124.7	ARR WINNIPEG CENTRE 132.8 232.3	RADIO (RCO) REGINA 122.3 (MF 5 NM) 351.3	DEP REGINA RADIO	ELEV 2682 TDZE 30 2668
---------------	---------------------------------------	--	---------------------	---------------------------

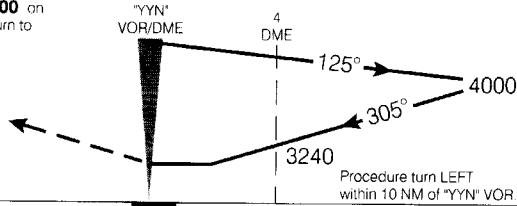
CYYN

Flight Simulator Use Only

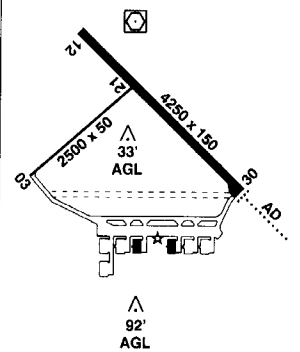


SAFE ALT 100 NM 5600

MISSFD APPROACH
Climb to 4200 on
R-305. Return to
"YYN" VOR.



ARCAL 122.3 (J) (see CFS)
Rwy 12 up 0.4%
Rwy 21 up 0.76%



CATEGORY	A	B	C	D
VOR/DME	3040	(372)	1 1/4	
VOR	3240	(572)	1 3/4	
CIRCLING	3240	(558) 1 3/4	3240 (558) 2	3300 (618) 2

Knots	70	90	110	130	150
Min Sec					