

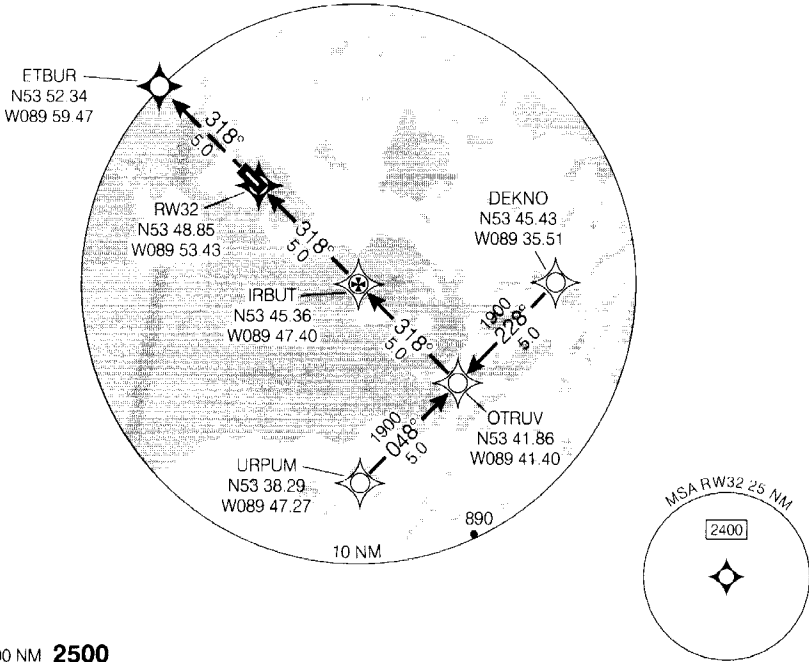
GPS RWY 32

NO CTL- BCST INTENTIONS ON 126.7 WITHIN 15 MINS OF ETA AND PRIOR TO DESCENT, THEN ON ATF 5 MIN PRIOR TO COMMENCING APCH.	AWOS 128.7	RADIO (DRCO) THUNDER BAY 123.55	TFC 123.2 (ATF 5 NM)	ELEV 729
				TDZE 32 716

Dial - up RCO, see CFS.  
Verify runway unobstructed.

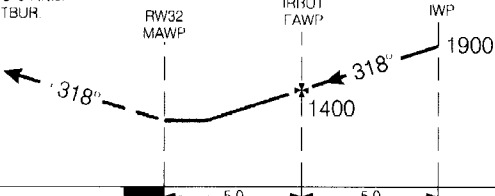
Flight Simulator Use Only

CYTL

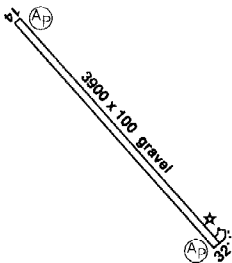


SAFE ALT 100 NM 2500

MISSED APPROACH  
Climb to 2400 on track  
of 318° to ETBUR



ARCAL 123.2 (K)  
Rwy 32 up 0.51 %



CATEGORY	A	B	C	D
GPS	1220	(504)	1 ½	
CIRCLING	1240	(511) 1 ½	1240 (511) 2	1340 (611) 2

Knots	70	90	110	130	150
Min:Sec					

GPS RWY 32