

ILS/DME RWY 05

Geomatics Canada

THOMPSON
THOMPSON MANITOBA

RADIO
122.5 341.3
(MF 5 NM)

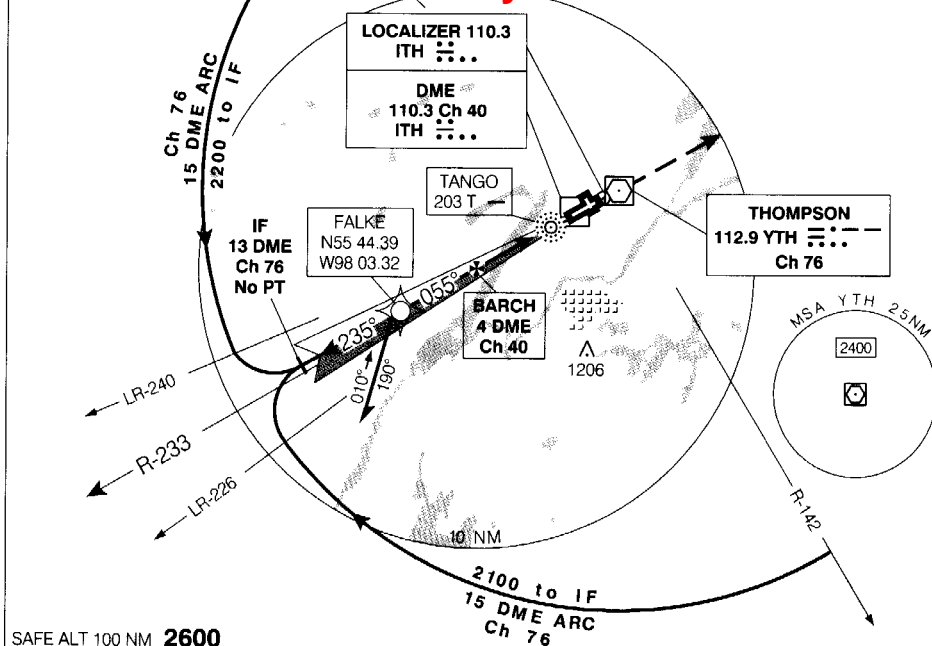
ELEV 729

TDZE 05 716

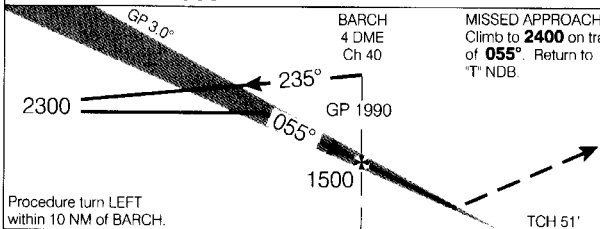
CYTH

Localizer reliable only within
25° either side of extended
runway centreline.

**Flight Simulator Use
Only**



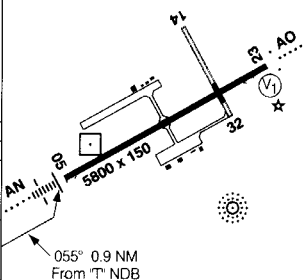
SAFE ALT 100 NM **2600**



Procedure turn LEFT
within 10 NM of BARCH.

CATEGORY	A	B	C	D
ILS/DME	916	(200)	1/2 RVR 26	
LOC/DME	1060	(344)	1 RVR 50	
CIRCLING	1240	(511) 1 1/2	1240	1340
			(511) 2	(611) 2

MISSED APPROACH
Climb to **2400** on track of
055°. Return to
"T" NDB.



FAF to threshold 3.9 NM					
Knots	70	90	110	130	150
Min:Sec	3:20	2:36	2:08	1:48	1:34

ILS/DME RWY 05

N55 48 04 W97 51 51

VAR 6° E

THOMPSON MANITOBA

THOMPSON

EFF 18 JUN 98 CHANGE: Falke waypoint

NAD83