

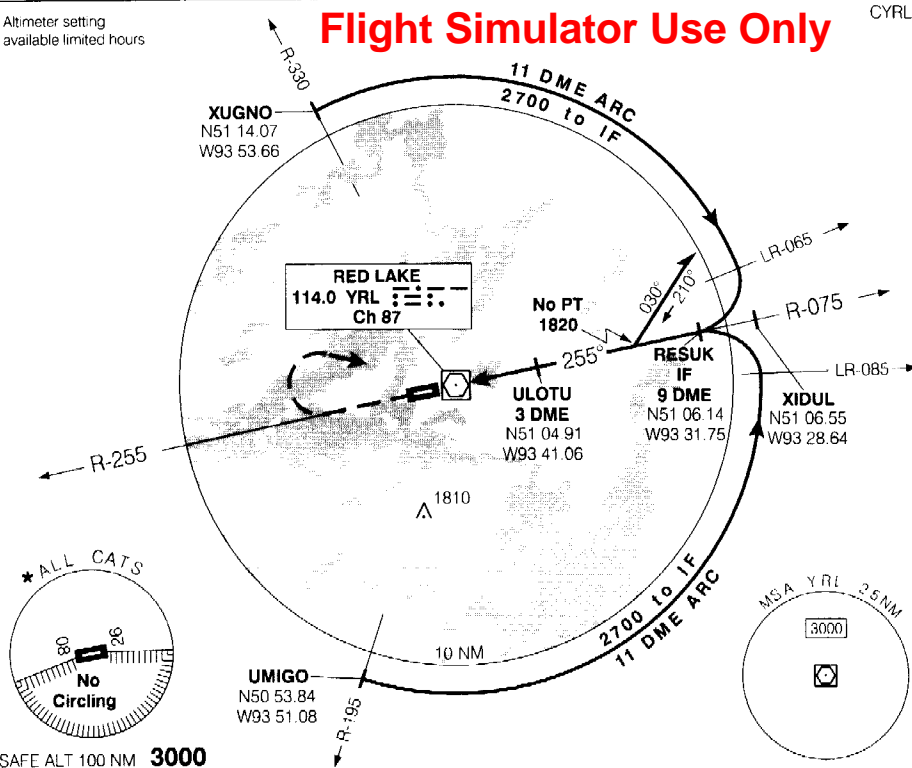
RADIO (RCO)
THUNDER BAY
122.3 (MF 5 NM)

ELEV 1265
TDZE 26 1265

Altimeter setting
available limited hours

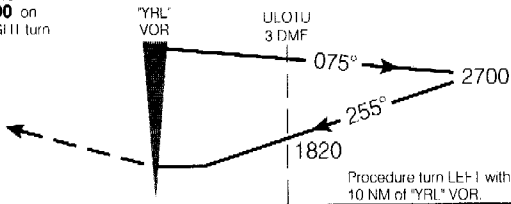
Flight Simulator Use Only

CYRL

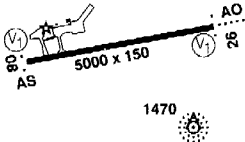


SAFE ALT 100 NM 3000

MISSILE APPROACH
Climb to 3000 on
R-255. RIGTH turn
to YRL VOR.



Right hand circuits Rwy 26.
Rwy 26 down 0.58%
ARCAL 122.3 (K) (see CI S)



CATEGORY	A	B	C	D
VOR/DME	1700	(435)	1 1/2	
* CIRCLING	1780	(515) 1 1/2	1780 (515) 2	1880 (615) 2
VOR	1820	(555)	1 3/4	
* CIRCLING	1820	(555) 1 3/4	1820 (555) 2	1880 (615) 2

Knots	70	90	110	130	150
Min.Sec					