

# VOR/DME or VOR RWY 03

Geomatics Canada

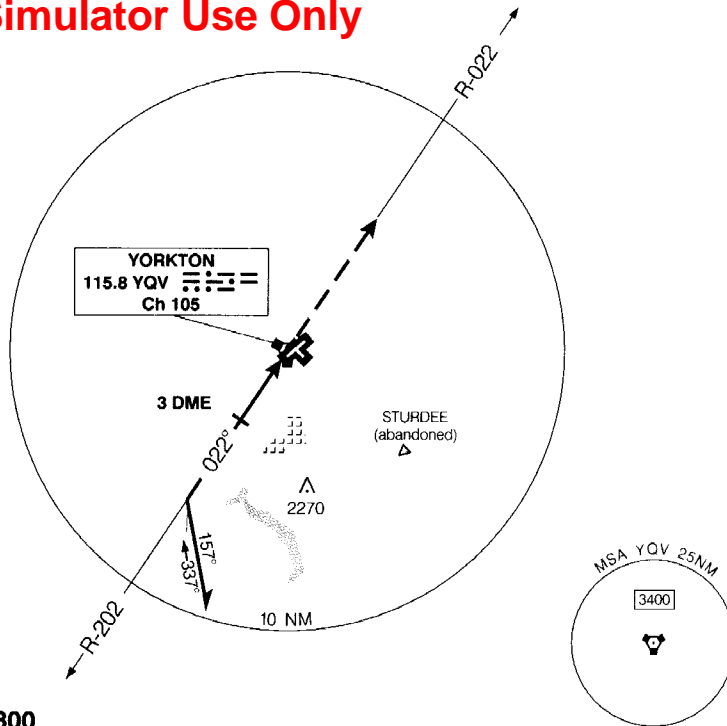
YORKTON  
YORKTON SASKATCHEWAN

**RADIO (RCO)**  
**REGINA**  
122.2 296.6 (MF 5 NM)

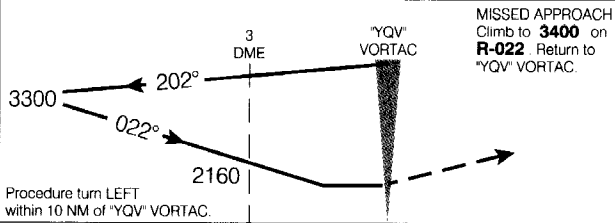
**ELEV 1635**  
**TDZE 03 1635**

CYQV

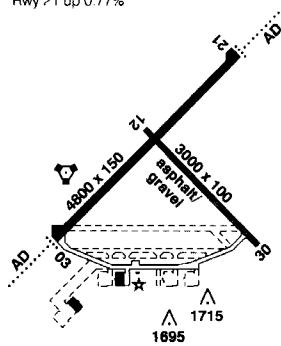
**Flight Simulator Use Only**



SAFE ALT 100 NM **4800**



ARCAL 122.2 (J)  
Rwy 21 up 0.77%



CATEGORY	A	B	C	D
VOR/DME	<b>2100</b>	(465)	1 ½	
VOR	<b>2160</b>	(525)	1 ¾	
CIRCLING	<b>2160</b> (525)	1 ¾	<b>2160</b> (525) 2	<b>2240</b> (605) 2

Knots	70	90	110	130	150
Min:Sec					

**VOR/DME or VOR RWY 03**

EFF 1 JAN 98 CHANGE: 1995 A/D mag var

N51 15 53 W102 27 42  
VAR 11° E

YORKTON SASKATCHEWAN  
YORKTON