

AERODROME CHART

Geomatics Canada



THUNDER BAY
THUNDER BAY ONTARIO

VOT
114.8

ATIS
128.8
285.3

GND
121.9
275.8

TWR
118.1 236.6
O/T RDO 118.1 236.6 (MF 5 NM)

DEP
119.2
363.8

DECLARED DISTANCES

	07	25	12	30				
TORA	6200	6200	5300	5300				
TODA	7200	6400	5900	5600				
ASDA	6200	6200	5300	5300				
LDA	6200	6200	5300	5300				

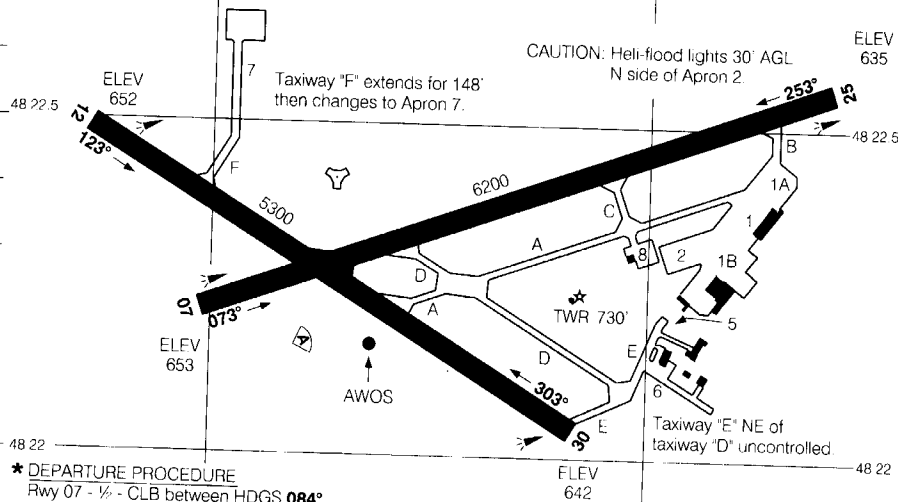
LDA FOR SIMULTANEOUS RUNWAY OPERATIONS		
FROM	TO	LDA in ft
Thld rwy 25	Intxn rwy 12-30	4500

RESTRICTIONS

- APRON 1 - Scheduled Commercial Air Carrier by stand assignment only from TBIAAI.
APRON 2 - Itinerant aircraft parking.

CAUTION: Heli-flood lights 30' AGL
N side of Apron 2.

Taxiway "F" extends for 148' then changes to Apron 7.



* DEPARTURE PROCEDURE

Rwy 07 - 1/2 - CLB between HDGS 084°
CCW to 230° to 1800 BPOC.
Note: trees to 695 ASL 450' right
of centreline from departure end to
APRX 1600' from departure end.

Rwy 12 - SPEC VIS - CLB visual to
1800 BPOC.

Rwys 25, 30 - 1/2 - CLB between HDGS
230° CW to 110° to 1800 BPOC.

Flight Simulator Use Only

TAKE-OFF MINIMA

All Rwys: *



AERODROME CHART

CHANGE: Twr alt added

THUNDER BAY ONTARIO
THUNDER BAY

EFF 24 FEB 00

Source of Canadian Civil Aeronautical Data © 2000 NAV CANADA