

# NDB RWY 26

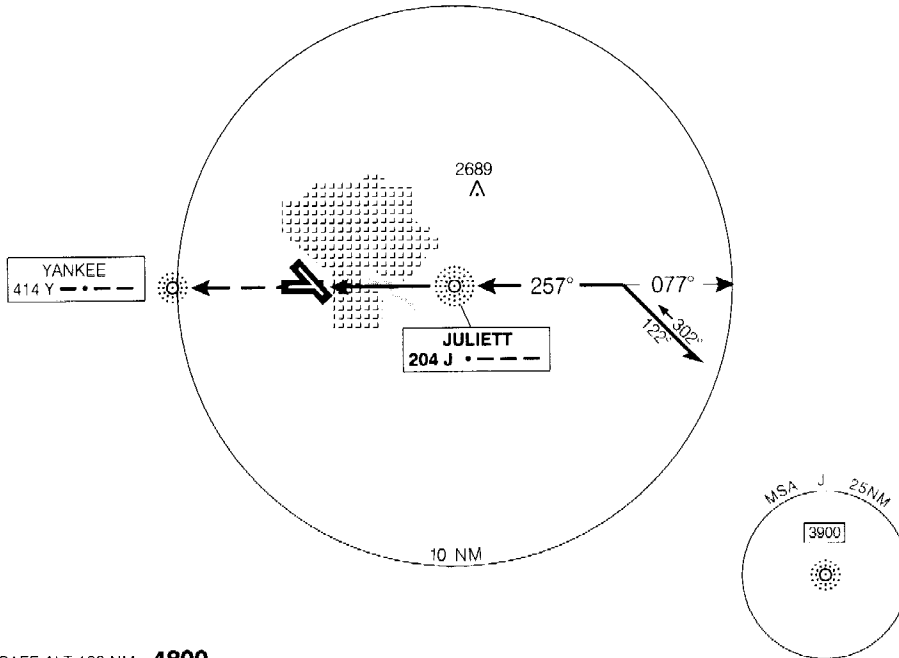
Geomatics Canada

REGINA  
REGINA SASKATCHEWAN

● ATIS 127.0 276.0	ARR 120.1 279.8	● TWR 118.6 236.6 O/T RDO 118.6 236.6 (MF 5 NM)	● GND 121.9 277.3	DEP 120.1 279.8	ELEV 1894 TDZE 26 1894
--------------------------	-----------------------	---	-------------------------	-----------------------	---------------------------

CYQR

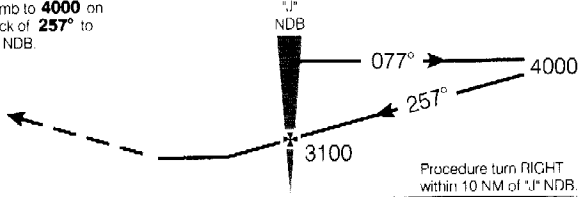
## Flight Simulator Use Only



SAFE ALT 100 NM **4800**

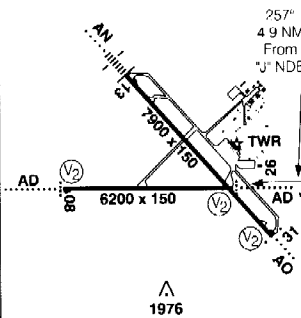
### MISSED APPROACH

Climb to **4000** on track of **257°** to "Y" NDB



CATEGORY	A	B	C	D
NDB	<b>2520</b>	(626)	2	
CIRCLING	<b>2520</b>	(626)	2	

Right hand circuits  
Rwys 08 and 13



"J" NDB to MAP 4.9 NM

Knots	70	90	110	130	150
Min Sec	<b>4:12</b>	<b>3:16</b>	<b>2:40</b>	<b>2:16</b>	<b>1:58</b>

# NDB RWY 26

N50 25 55 W104 39 57

VAR 13° E

REGINA SASKATCHEWAN

EFF 24 FEB 00

CHANGE: Rwy 31 lighting

REGINA  
NAD83