

VOR/DME RWY 12

Geomatics Canada

THE PAS
THE PAS MANITOBA

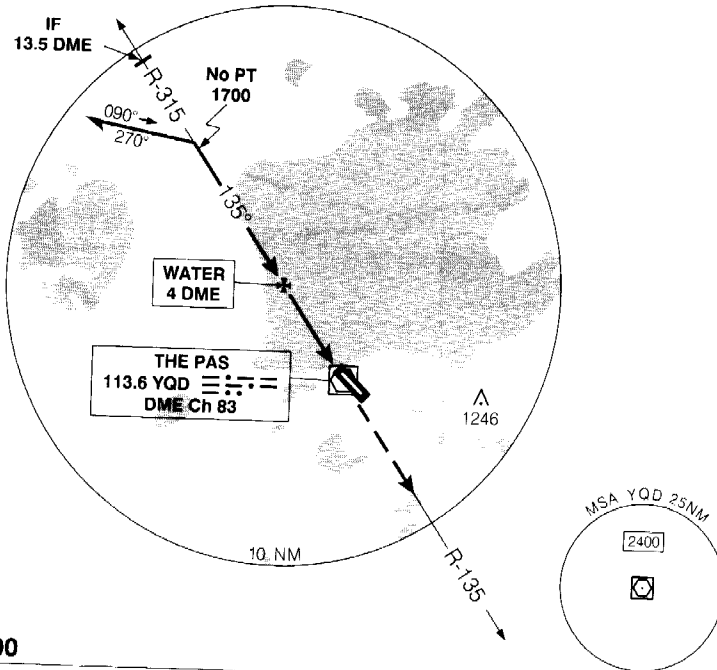
RADIO (RCO)
WINNIPEG
122.2 (MF 5 NM)

ELEV 887

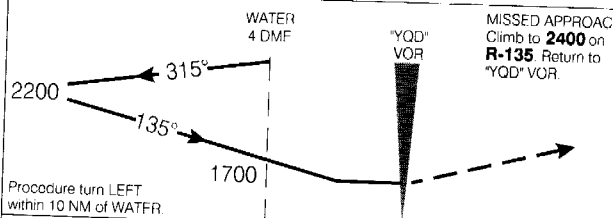
TDZE 12 887

CYQD

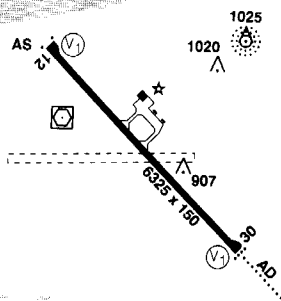
Flight Simulator Use Only



SAFE ALT 100 NM 3800



ARCAL 122.2 (K) (see CFS)



CATEGORY	A	B	C	D
VOR/DME	1260 (373) 1 1/4			
CIRCLING	1400 (513) 1 1/2	1400 (513) 2	1500 (613) 2	

Knots	70	90	110	130	150
Min:Sec					

VOR/DME RWY 12

N53 58 19 W101 05 31

VAR 10° E

THE PAS MANITOBA
THE PAS

EFF 24 FEB 00

CHANGE: Elev. minima; landing chart

Source of Canadian Civil Aeronautical Data: © 2000 NAV CANADA