

# VOR RWY 31L

Geomatics Canada

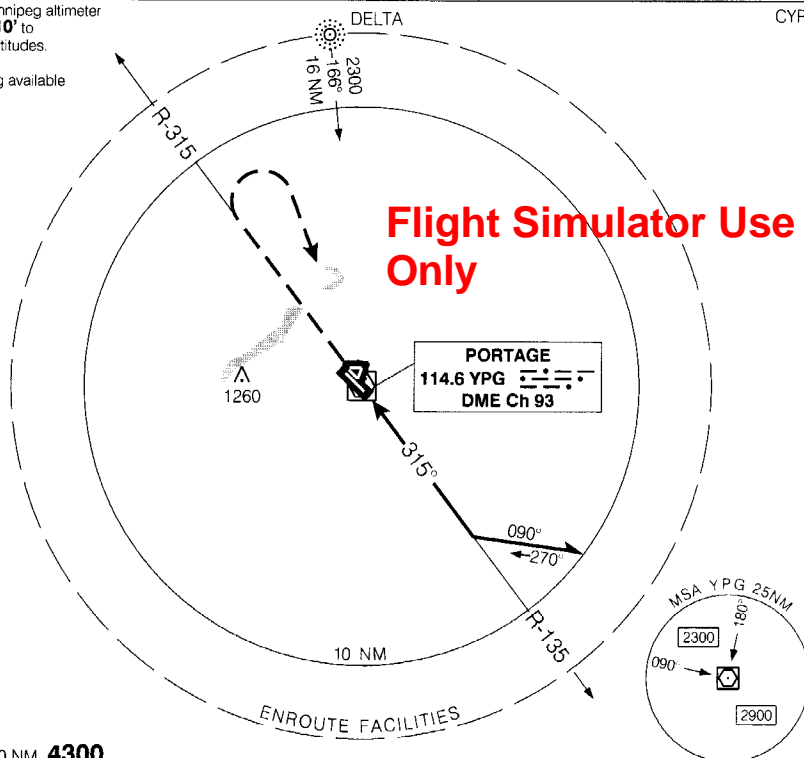
PORTAGE LA PRAIRIE /SOUTHPORT  
PORTAGE LA PRAIRIE MANITOBA

Q ATIS 120.85	ARR/DEP WINNIPEG TML 121.0 341.3	Q TWR 126.2 384.2 O/T TFC 126.2 (ATF 10 NM)	Q GND 121.7 275.8 O/T TFC 126.2	ELEV 885 TDZE 31L 885
------------------	--	---	---------------------------------------	--------------------------

When using Winnipeg altimeter setting, add **110'** to all procedure altitudes.

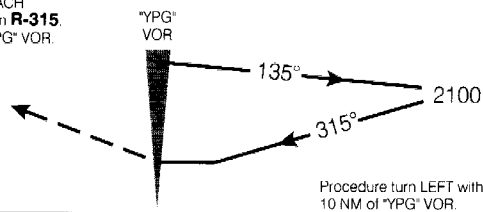
Altimeter setting available limited hours.

CYPG



SAFE ALT 100 NM **4300**

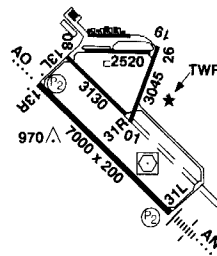
MISSED APPROACH  
Climb to **3000** on **R-315**.  
RIGHT turn to "YPG" VOR



Procedure turn LEFT within 10 NM of "YPG" VOR.

CATEGORY	A	B	C	D
VOR	<b>1320</b>	(435)	1	
CIRCLING	<b>1400</b>	(515) 1 1/2	<b>1400</b>	<b>1500</b>
			(515) 2	(615) 2

Right hand circuits Rwy 13R, 19, 26 and 31R.  
Rwys 01-19, 08-26 and 13L-31R 150' wide  
ARCL 126.2(K) (see CFS)



Knots	70	90	110	130	150
Min Sec					

## VOR RWY 31L

N49 54 11 W98 16 25

VAR 7° E

PORTAGE LA PRAIRIE MANITOBA

EFF 24 FEB 00

CHANGE: Alt setting notes

PORTAGE LA PRAIRIE /SOUTHPORT

NAD83