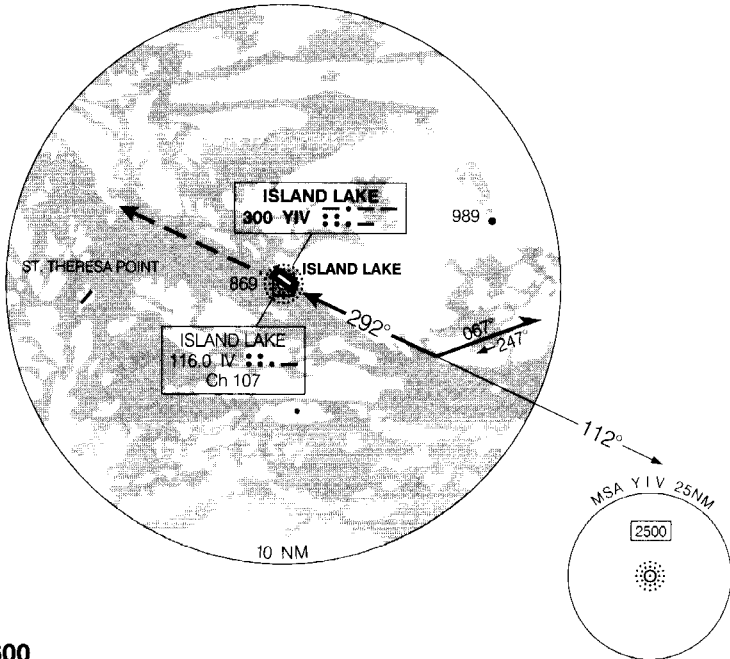


NO CTL-BCST INTENTIONS ON 126.7 WITHIN 15 MIN OF ETA AND PRIOR TO DESCENT, THEN ON MF 5 MIN PRIOR TO COMMENCING APCH	RADIO (RCO) WINNIPEG 122.2 (MF 5 NM)	ELEV 776
		TDZE 30 774

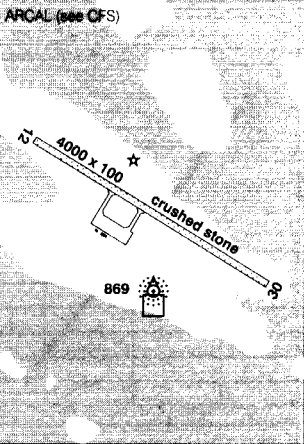
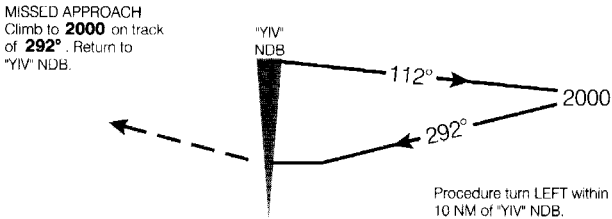
This facility also serves
St. Theresa Point.

Portions of this procedure
overlap instrument procedures
for St. Theresa Point.

Flight Simulator Use Only



SAFE ALT 100 NM 2600



CATEGORY	A	B	C	D
NDB	1280	(506)	1 ½	
CIRCLING	1280 (504)	1 ½	1280 (504) 2	1380 (604) 2
Knots 70 90 110 130 150 Min. Sec				