

NDB RWY 29

Geomatics Canada

DRYDEN REGIONAL
DRYDEN ONTARIO

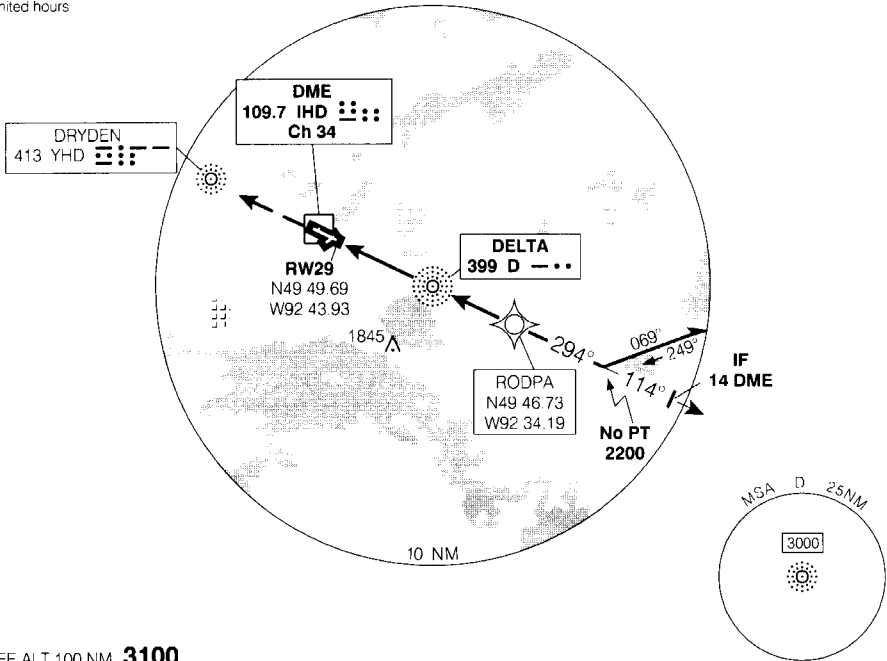
RADIO (RCO)
THUNDER BAY
122.1 (MF 5 NM)

ELEV 1354
TDZE 29 1352

CYHD

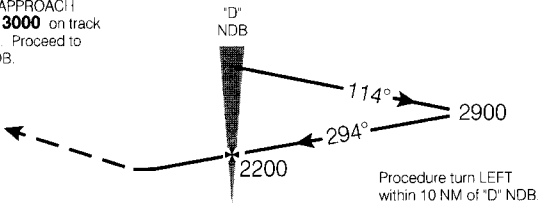
When using Sioux Lookout
altimeter setting add **100'**
to all procedure altitudes
Altimeter setting available
limited hours

Flight Simulator Use Only

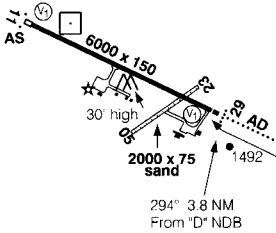


SAFE ALT 100 NM 3100

MISSED APPROACH
Climb to **3000** on track
of **294°**. Proceed to
"YHD" NDB.



CATEGORY	A	B	C	D
NDB	1820 (468)	1		
CIRCLING	1860 (506) 1 1/2	1860 (506) 2	1960 (606) 2	



"D" NDB to MAP 3.8 NM	70	90	110	130	150
Min.Sec	3:15	2:32	2:04	1:45	1:31

NDB RWY 29

EFF 24 FEB 00

CHANGE: Altimeter note: MAP

N49 49 54 W92 44 39

VAR 1° E

DRYDEN ONTARIO

DRYDEN REGIONAL

© 2000 Her Majesty The Queen in Right of Canada. Department of Natural Resources

Source of Canadian Civil Aeronautical Data: © 2000 NAV CANADA