

NDB RWY 31

Geomatics Canada

WINNIPEG / ST. ANDREWS
WINNIPEG MANITOBA

● ATIS 125.8	ARR WINNIPEG 119.5 356.6	● GND 121.8	● TWR 118.5 (ATF 4 NM) O/T TFC 118.5	DEP WINNIPEG 119.9 366.5	ELEV 760
					TDZE 31 760

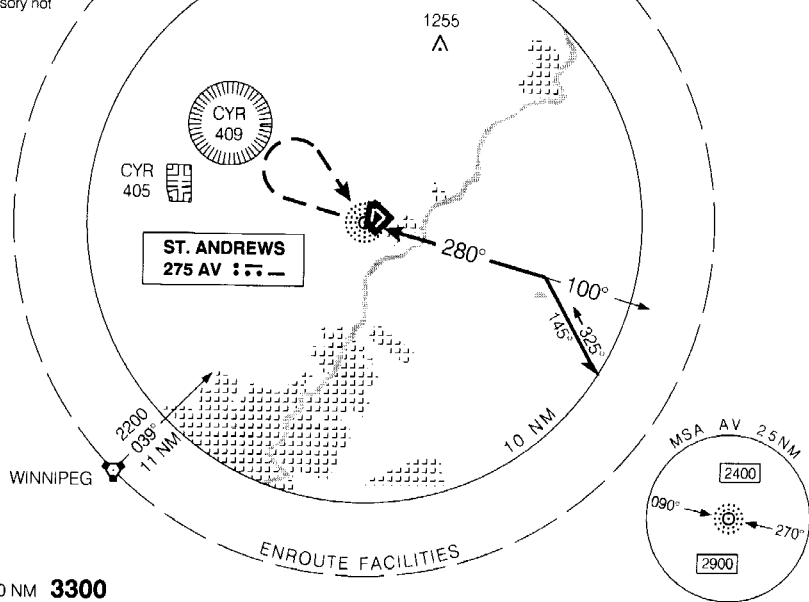
When using Winnipeg altimeter setting add **30'** to all procedure altitudes.

Altimeter setting available
limited hours.

Verify runway unobstructed
when A/G advisory not
available.

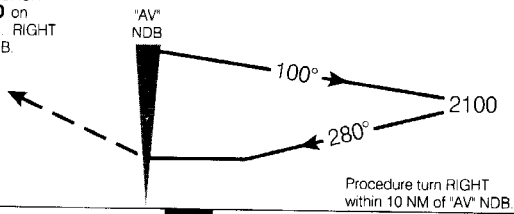
CYAV

Flight Simulator Use Only



SAFE ALT 100 NM **3300**

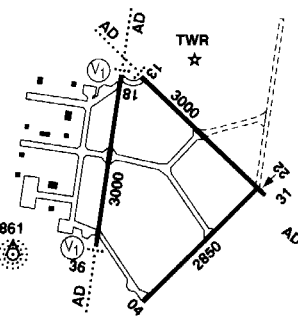
MISSED APPROACH
Climb to **2900** on
track of **280°** RIGHT
turn to "AV" NDB.



ARCAL 118.5 (J) (see C+S)

Right hand circuits
Rwys 04, 13, 18

All rwy's 75' wide



CATEGORY	A	B	C	D
NDB	1460	(700)	2 ¼	
CIRCLING	1460	(700)	2 ¼	

Knots	70	90	110	130	150
Min:Sec					

NDB RWY 31

N50 03 25 W97 01 49

VAR 6° E

WINNIPEG MANITOBA

WINNIPEG/ST. ANDREWS

▲